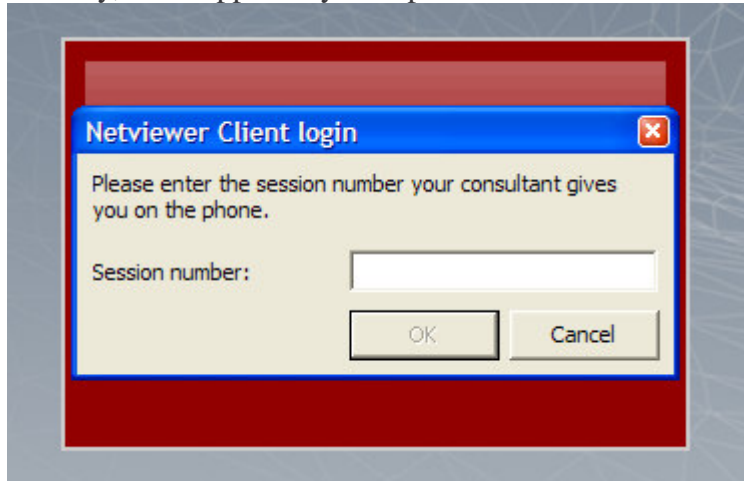
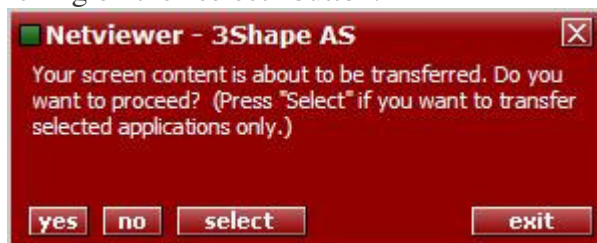


Quick tutorial for Netviewer one2one

- 1:
Double click on the nvClient.exe file, which you have received from 3Shape.
- 2:
Enter the session key, also supplied by 3Shape.



- 3:
A pop up will appear, telling you that the contents of your screen is about to be transferred. Just click on the "Yes" button, or select which applications you want to show 3Shape by clicking on the "select" button.



- 4:
On your desktop you will see a small window like this.



Click on the "on" button, beside the "remote" label.

3Shape will now have remote control over your pc. Once 3Shape has finished dealing with your support issue, 3Shape will close the connection.